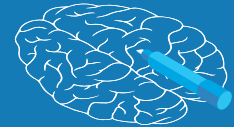


# UCLA WHAT'S THE BIG IDEA?



## CLUSTER PROGRAM

### DISCOVER UCLA'S SIGNATURE FRESHMAN PROGRAM!

The UCLA Freshman Cluster is an innovative approach to general education beyond the traditional lecture course. Distinguished faculty from different disciplines team-teach yearlong, big-idea "cluster" courses unlike any others offered to freshmen. The courses explore a single broad topic, such as interracial dynamics or biotechnology, from perspectives as varied as biology, philosophy, literature and urban planning.

## JOIN A VIBRANT CLUSTER COMMUNITY

Each cluster course has:

- ✓ 200 FRESHMEN
- ✓ 5 GRADUATE STUDENTS
- ✓ WRITING SPECIALIST
- ✓ 4 FACULTY
- ✓ LIBRARIAN
- ✓ RESIDENTIAL LIFE SUPPORT

## EXPLORE OUR BIG IDEA COURSES

### 2019 - 20 CLUSTER COURSES

**AGING** - *Frontiers in Human Aging* (Cluster 80A,B,CW)

**AMERICA IN THE '60S** - *Politics, Society, and Culture, 1954-1974* (Cluster 60A,B,CW)

**BIOTECHNOLOGY AND SOCIETY** (Cluster M71A,B,CW)

**BRAIN** - *The History, Science and Philosophy of the Brain* (Cluster 73A, B, CW)

**EVOLUTION** - *Evolution of the Cosmos and Life* (Cluster 70A,B,CW)

**FOOD** - *A Lens for Environment and Sustainability* (Cluster M1-A,B,CW)

**MODERN THOUGHT** - *History of Modern Thought* (Cluster 21A,B,CW)

**MYTH** - *Neverending Stories: Multidisciplinary Perspectives on Myth* (Cluster 30A,B,CW)

**RACE** - *Interracial Dynamics in American Society and Culture* (Cluster 20A,B,CW)

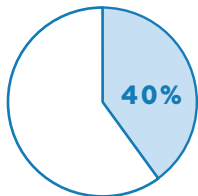
**SEX** - *From Biology to Gendered Society* (Cluster 73A, B, CW)

**VIOLENCE** - *Political Violence in the Modern World: Causes, Cases, and Consequences* (Cluster 48A, B, CW)

## JUMPSTART YOUR ACADEMIC CAREER

Students who complete a yearlong Cluster:

- Satisfy 5 requirements in just 3 courses
- Make faster progress toward a degree
- On average have a higher GPA at graduation



**SATISFY 40% OF  
GENERAL EDUCATION  
REQUIREMENTS**

*“This cluster has by far been the most educational and rewarding class I have taken at UCLA.”*

- Student in Biotechnology and Society cluster

## BEYOND THE CLASSROOM

Field trips can enhance the education experience by adding context, making subject matter come alive, and creating a learning community for participating students. Cluster faculty have taken students to more than 30 different destinations, including:



**MT. PALOMAR OBSERVATORY**



**JOSHUA TREE NATIONAL PARK**



**WESTSIDE FOOD BANK**



**SAN ANDREAS FAULT**

